



The Lawn Chair Philosophy Foundation:
Building Libraries; Building Courses; Building Community
www.lcpfoundation.org

Lawn Chair Philosophy at SPEP: Mission and Programming

The Lawn Chair Philosophy Foundation is a 501(c)3 nonprofit acting to render academic philosophy more accessible to those with little access to its cognitive benefits and vast educational resources, especially vulnerable populations who could benefit from it most.

Aesthetic principles structure our educational space, animating the rhythms of our rigorous programming with creative play. Phenomenology grounds our pedagogy and guides our experimental scholarship.

We invite you to come study with us. 😊

Hands-On Heuristics

Beyond intellectual enrichment, we believe a philosophical practice generates full rational empathy: a unification of an individual's speculative, practical, and axiological domains of reason that conditions the possibility for generating a gentler humanity through one's interactions with the world and others.

Our Hands-On Heuristics pedagogy is designed to streamline the rational activities of those three domains in a flow of spontaneous play, directing an experience wherein students are fully immersed in their direct, creative cognition with the study material while simultaneously reflecting on their own comportment to it.

Philosophy through Drumming

A dithyrambic twist on Husserl's notion of inner phenomenological time consciousness wherein the downbeats we play embody the original becoming of our values, beliefs, and our unique subjective essence, as well as reveal how our inner rhythms interlock polyrhythmically to condition the intersubjective constitution of values, norms, and cultural styles.

Philosophy through Poetry

Lessons on the history of philosophy delivered on the sly, also providing approachable opportunities to practice referencing textual evidence to substantiate our interpretation and application of a given theme.

Annual Head-to-Toe Winter Care Drive

We partner with Bethesda Project to bring our Hands-On Heuristics to their residents, as well as to build philosophy libraries that their residents may reference after our sessions conclude.

However, to promote full rational empathy as an academic institution, we must demonstrate full rational empathy. We must acknowledge the needs of the whole person and serve those needs; we must do all that we can to remove any unnecessary hardship universally obstructing study.

Our Head-to-Toe Winter Care Drive provides a channel to collect warm clothing items alongside new or used philosophy books to catalog and donate to the residents at Bethesda Project.

We accept book donations year-round and announce a warm clothing focus item each November.

LCP Academy

Our virtual LCP Academy is firstly an extension of the work we do with residents at Bethesda Project, secondly, a worldwide classroom and community hub for experimental scholars of phenomenology and aesthetics.

Our LCP Academy courses resemble traditional university classroom models, providing residents of Bethesda Project an opportunity for more focused study if they would like a space to explore the terms and figures covered in our drumming and poetry sessions.

We believe it is important to offer courses on the history of Western thought and traditional terminology, as the history of Western thought supports the societal and economic structures subjugating us all, and a mastery of traditional terminology proves to be a crucial tool in self-advocacy while navigating (and dismantling) said societal and economic structures.

Our LCP Academy space has blossomed with life since its inception in 2021, extending well beyond its intended purpose of serving local vulnerable populations to become a global public philosophy outreach platform open to everyone. We welcome traditional scholars and independent researchers alike, and students of various backgrounds.

Mini-Courses, Special Topics Courses, and Annual Chop Shop

We offer three-to-five-week Mini-Courses and six-to-sixteen-week Special Topics courses to the general public. All courses are facilitated by qualified academic philosophers. Our Hands-On Heuristics extend into our more traditional virtual classroom, here, as we contextualize our courses in aesthetics, concrete application, and self-discovery, always referencing elements from the greater arts and letters. Our Annual Continental Chop Shop is a Mini-Conference that presents themes from the Continental Tradition to the public.

Scholar Spotlight Program

We invite scholars of all philosophical backgrounds to present their work on our stage; to give talks about their works in progress, published papers, and/or books they wish to promote.

Philosophy in Motion Interview Series

We invite folks from all walks of life to share their views on the nature of humanity, the existence of a common good, ways of accessing the mind, analyzing the patterns of human experience, and more!

Service-Learning Internships

Our Service-Learning Internship Program offers undergraduate students an opportunity to gain hands-on experience in nonprofit public educational outreach while receiving coaching in one of two possible course tracks.

Nonprofit Management

Interns tour the fundamentals of ethical nonprofit leadership in one or more of the following major concentration areas: social media marketing and content, fundraising, and program development. Studies will culminate in a professional portfolio representing their original contributions to our efforts in one or more of the major concentration areas.

Public Philosophy Outreach

Interns partake in an intensive independent research study on a given theme from the history of philosophy and apply their research to a concrete matter of interest. Their research will culminate in a paper presentation at a virtual Mini Conference that they help organize for our LCP Academy Emerging Scholars series to share their studies and philosophical insight with the public.

Contact

150 Monument Road, Suite 207
Bala Cynwyd, PA 19004

Email our philosopher in chief at animal@lcpfoundation.org 🔥



The Lawn Chair Philosophy Foundation:
Building Libraries; Building Courses; Building Community
www.lcpfoundation.org

Menace, Overload, Judgment:
An August 8th Poetry Reading/Writing Session with Bethesda Project

At a Symphony

Oh, I would have these tongues oracular
Dip into silence, tease no more, let be!
They madden, like some choral of the free
Gusty and sweet against a prison-bar.
To earth the boast that her gold empires are,
The menace of delicious death to me,
Great Undesign, strong as by God's decree,
Piercing the heart with beauty from afar!
Music too winning to the sense forlorn!
Of what angelic lineage was she born,
Bred in what rapture?—These her sires and friends:
Censure, Denial, Gloom, and Hunger's throe.
Praised be the Spirit that thro' thee, Schubert! so
Wrests evil unto wholly heavenly ends.

- Louise Imogen Guiney (1993)

Big Avalanche Ravine

Just the red warning light on a blue crane.
Just outlined mountains. Just the mist that skimmed
them both and blent with invisible rain
above a ledge of condominiums.
But there it all sank down on me. The urge
to carve a life out of the huge expanse.
To hold some little ground against the surge
of sheer material. It was a tense
and insistent flash, a metallic shiver.
And it stayed, that tremble, small and stark:
like the fluming noise of the hidden river
edging the whole, long volume of the dark.

- Peter Campion (2006)

Pine Judgment

(16th Century Japan)

Straight from battle,
before the mouths of the dead
go dry, or a single
buzzard appears,
he rides toward the garden
whose silence claims victory
over nothing,
and enters the hut.
Inside, life passes
for a question of steam
curling above tea
until the way is clear.
Even with a world at stake,
he must leave himself
open to the simple matter
of this room
where an heirloom vase
holds one pine branch
bent by centuries
and lichen of mist
closing in on distance.

- Barry Sternlieb (1993)

“I saw that over and above perception, which is a prerequisite of judgement, we need affirmation or negation to determine the form of the judgement, and also that we are often free to withhold our assent, even if we perceive the matter in question [*etiamsi rem percipiamus*]. Hence I assigned the act of judging itself [*ipsum actum judicandi*], which consists simply in assenting (i.e. in affirmation or denial) not to the perception of the intellect but to the determination of the will [*non retuli ad perceptionem intellectus, sed ad determinationem voluntatis*].”

- Descartes on Judgment, *Comments on a Certain Broadsheet* (AT VIII B 363; CSM I 307, modified), 1648



The Lawn Chair Philosophy Foundation:
Building Libraries; Building Courses; Building Community

LCP Foundation's Service-Learning Internship Program

The Lawn Chair Philosophy Foundation's Service-Learning Internship Program offers undergraduate students an opportunity to gain hands-on experience in nonprofit public educational outreach while receiving coaching in one of two possible course tracks: Nonprofit Leadership or Emerging Scholars Independent Study.

Each internship course is designed with the unique needs and interests of the student in mind, catering to their availability and the academic calendar of their home institutions. As such, a course in our Service Learning Internship Program may serve the span of a semester, an intersession gap, a summer session, or a year-long project.

Nonprofit Leadership

This internship track is ideal for business, marketing, writing, digital art, and communications students. Students majoring in other study areas are encouraged to apply if they are interested in creatively relating their specific skill sets to the field of nonprofit public educational outreach.

Interns will tour the fundamentals of ethical nonprofit leadership in one or more of the following major concentration areas: social media marketing and content, fundraising, and program development. Studies will culminate in a professional portfolio representing their original contributions to our efforts in one or more of the major concentration areas.

Course Objectives

1. Interns shall become familiar with national and state regulations for forming, running, and maintaining nonprofit organizations in the state of Pennsylvania.
2. Interns shall be able to articulate the differences between governmental regulations and moral regulations, as well as distinguish the various normative relationships between governmental and moral nonprofit regulations.
3. Interns shall explore the value of mission-driven service from the following moral perspectives: deontology, utilitarianism, phenomenology, and social justice.
4. Interns shall be able to evaluate the purposive integrity of nonprofit program structures, objectives, and activities as vehicles for grounding and realizing a nonprofit's mission.

5. Interns shall be able to identify ethical marketing and fundraising strategies that honor state and federal nonprofit regulations, robustly embody educational service missions, objective modes, and activities, and authentic impact evaluations.
6. Interns shall demonstrate their original philosophical voice at play with our axioms, mission, and teleologically motivated program activities in their creative contributions, represented in their final portfolio.¹

Course Requirements

1. Final Portfolio: Interns will submit a final reflection and portfolio highlighting the work completed over the course of the internship.
2. Concentration Proficiency: Interns shall demonstrate successful mastery of their chosen concentration area(s).

Emerging Scholars Independent Study

This internship track is ideal for philosophy students or students within the greater humanities interested in specializing in philosophy. Interns will partake in an intensive independent research study on a given theme from the history of philosophy and apply their research to a concrete matter of interest. Their research will culminate in a paper presentation at a virtual mini-conference that they help organize for our Emerging Scholars series to share their studies and philosophical insight with the public.

Course Objectives

1. Interns shall be able to articulate major themes and concepts from the history of philosophy.
2. Interns shall be able to apply major themes and concepts from the history of philosophy to a concrete issue to illuminate its urgency and complexity and propose possible solutions.
3. Interns shall be able to organize and run a mini-conference around a theme relevant to the course subject module and/or the chosen concrete ethical issue for public philosophy outreach.

¹ Interns are encouraged to share the contents of their portfolio on their professional social media or web presence for exposure so long as we are permitted to use their portfolio contributions in our public nonprofit endeavors.

Course Requirements

1. Term Paper: Interns will write a 4,000-word argumentative research paper using 12-point Times New Roman font, 1-inch margins, and double spacing. In preparation for the term paper, interns will submit a thesis statement, outline, and annotated bibliography with ten entries, an abstract draft, and two paper drafts. The final paper submission must include a title page, abstract, and works cited page.
2. Mini-Conference Organization: Interns will organize a mini-conference for the Lawn Chair Philosophy Foundation's Emerging Scholars series. Interns will have the choice of organizing either a virtual or in-person conference. Interns will be involved in choosing fellow presenters, determining a date/time, securing a keynote speaker, ordering the presentations, and creating advertisements.
3. Mini-Conference Presentation: Interns will present a revised draft of their final paper submission at the mini-conference they organize.

LCPA Service Learning Internship Syllabus for [REDACTED]

Undergraduate Intern Track: Public Philosophy Outreach

Course Subject Module: Kant's Practical Philosophy

Facilitator: Prof. Keli Birchfield

Email: animal@lcpfoundation.org

Phone: (610) 255-7232

Office Hours: Mondays 11 AM – 2 PM EST

Duration: [REDACTED] J-Term, 2023

Required Readings

Kant, Immanuel, and Christine Korsgaard. *Groundwork of the Metaphysics of Morals*.

Translated by Mary J. Gregor. Cambridge: Cambridge University Press, 1997.

Kant, Immanuel, and Stephen Engstrom. *Critique of Practical Reason*. Translated by Werner S.

Pluhar. Indianapolis: Hackett, 2002.

Kant, Immanuel, and Stephen Palmquist. *Religion within the Bounds of Bare Reason*. Translated

by Werner S. Pluhar. Indianapolis: Hackett, 2009.

Kant, Immanuel, Pauline Kleingeld, Jeremy Waldron, Michael W. Doyle, and Allen W. Wood.

“An Answer to the Question: What is Enlightenment?” Essay. *In Toward Perpetual Peace and Other Writings on Politics, Peace, and History*, 17-23. New Haven: Yale University Press, 2006.

Course Description

Would but the heavens above

Twinkle in reverence

For any reason

Pure enough to command

A will so wild

As to fall

Time and again

For the spell

Of natural inclination!

An end of all things

Might tear itself free

From self-love!

The distinction between the origin of moral value and the possibility of rational motivation in Kant's practical philosophy reveals the complex relationship between his notions of a good will

and the moral law. By definition, the will is determined by the moral law. And the moral law, by definition, is good. However, the will can be motivated by extrarational ends. And without reflective intervention, a good will can be sweet-talked into choosing ends charmed into the objective representations it gives unto itself by the principle of radical evil. Through various formulations of his categorical imperative, Kant believes pure practical reason can generate the highest good, which represents the proper deontological relationship between the moral law and the motivations of the will, and which overpowers the ambitious whispers of radical evil. But while the categorical imperative may clear an individual's self-understanding of an overgrowth of want and hubris, does it illuminate for that individual the motivations of others?

Such a question is especially crucial to ask whenever examining the moral motivations of politicians entrusted to carry out the will of their constituents through legislation from a Kantian lens. This independent study course charts a route through Kant's practical philosophy that allows for an in-depth examination of the relationship between the possibility of moral value and the possibility of rational motivations of the will, preparing the way for an application of Kant's ethical system to concrete political issues surrounding the law of the land and the ultimate ends it serves. And in the spirit of embodying Kant's philosophy as we study, this course provides the opportunity to share a presentation of his rational principles with the public; an opportunity that is not the good in and of itself nor an emanation of the moral law, yet which inspires social progress towards moral perfection.

Course Objectives

1. Student shall be able to articulate major themes and concepts from Kant's practical philosophy, including the will, freedom, the moral law, the highest good, the structures of pure practical reason, the categorical imperative, rational motivation, and radical evil.
2. Student shall be able to apply major themes and concepts from Kant's practical philosophy to a concrete ethical issue to illuminate its urgency and complexity and propose possible solutions.
3. Student shall be able to organize and run a mini-conference around a theme relevant to the course subject module and/or the chosen concrete ethical issue for public philosophy outreach.

Course Requirements

1. Term Paper: Student will write a 4,000-word argumentative research paper using 12-point Times New Roman font, 1-inch margins, and double spacing. In preparation for the term paper, student will submit a thesis statement, outline, and annotated bibliography with ten entries, an abstract draft, and two paper drafts. The final paper submission must include a title page, abstract, and works cited page.

2. Mini-Conference Organization: Student will organize a mini-conference for the Lawn Chair Philosophy Foundation's Emerging Scholars series. Student will have the choice of organizing either a virtual or in-person conference. Student will be involved in choosing fellow presenters, determining a date/time, securing a keynote speaker, ordering the presentations, and creating advertisements.
3. Mini-Conference Presentation: Student will present a revised draft of their final paper submission at the mini-conference they organize.

Course Calendar

Week 1

Religion within the Bounds of Bare Reason: Part I - Part II, Section I; Part III - IV

Groundwork for the Metaphysics of Morals: Whole thing

Week 2

Critique of Practical Reason: Preface; Introduction; Book I, Chapter I, Sections 1 – 8. I “On the Deduction of the Principles of Pure Practical Reason”; Chapter II; Chapter III, up to “Critical Elucidation of the Analytic of Pure Practical Reason”; Book II, Chapter I – Chapter II, Section VI “On the Postulates of Pure Practical Reason”

An Answer to the Question: What Is Enlightenment?: Whole thing

- **Thesis Due 01/11**
- **Outline Due 01/13**

Week 3

Ameriks, Karl. “Kant on the Good Will.” Essay. In *Interpreting Kant's Critiques*, 193–211. Oxford: Clarendon Press, 2003.

Ameriks, Karl. “Pure Reason Alone Suffices to Determine the Will.” Essay. In *Interpreting Kant's Critiques*, 249–262. Oxford: Clarendon Press, 2003.

Guyer, Paul. “Moral Worth, Virtue, and Merit.” Essay. In *Kant on Freedom, Law, and Happiness*, 287–329. Cambridge: Cambridge University Press, 2000.

Discuss outline

Set a date for mini-conference

Virtual or in-person modality

- **Annotated Bibliography Due 01/18**
- **Rough Draft Due 01/21**

Week 4

Engstrom, Stephen, and Jens Timmermann. “The Triebfeder of Pure Practical Reason.” Essay. In *Kant's Critique of Practical Reason: A Critical Guide*, edited by Andrews Reath, 90–118. Cambridge Critical Guides. Cambridge: Cambridge University Press, 2010.

Reath, Andrews. “Formal Principles and the Form of a Law.” Essay. In *Kant's Critique of Practical Reason: A Critical Guide*, edited by Jens Timmermann, 31–54. Cambridge Critical Guides. Cambridge: Cambridge University Press, 2010.

Watkins, Eric, and Jens Timmermann. “The Antinomy of Practical Reason: reason, the unconditioned and the highest good.” Essay. In *Kant's Critique of Practical Reason: A Critical Guide*, edited by Andrews Reath, 145–167. Cambridge Critical Guides. Cambridge: Cambridge University Press, 2010.

Discuss draft

Create a short list of presenters

Potential call for papers

Quest for a keynote speaker

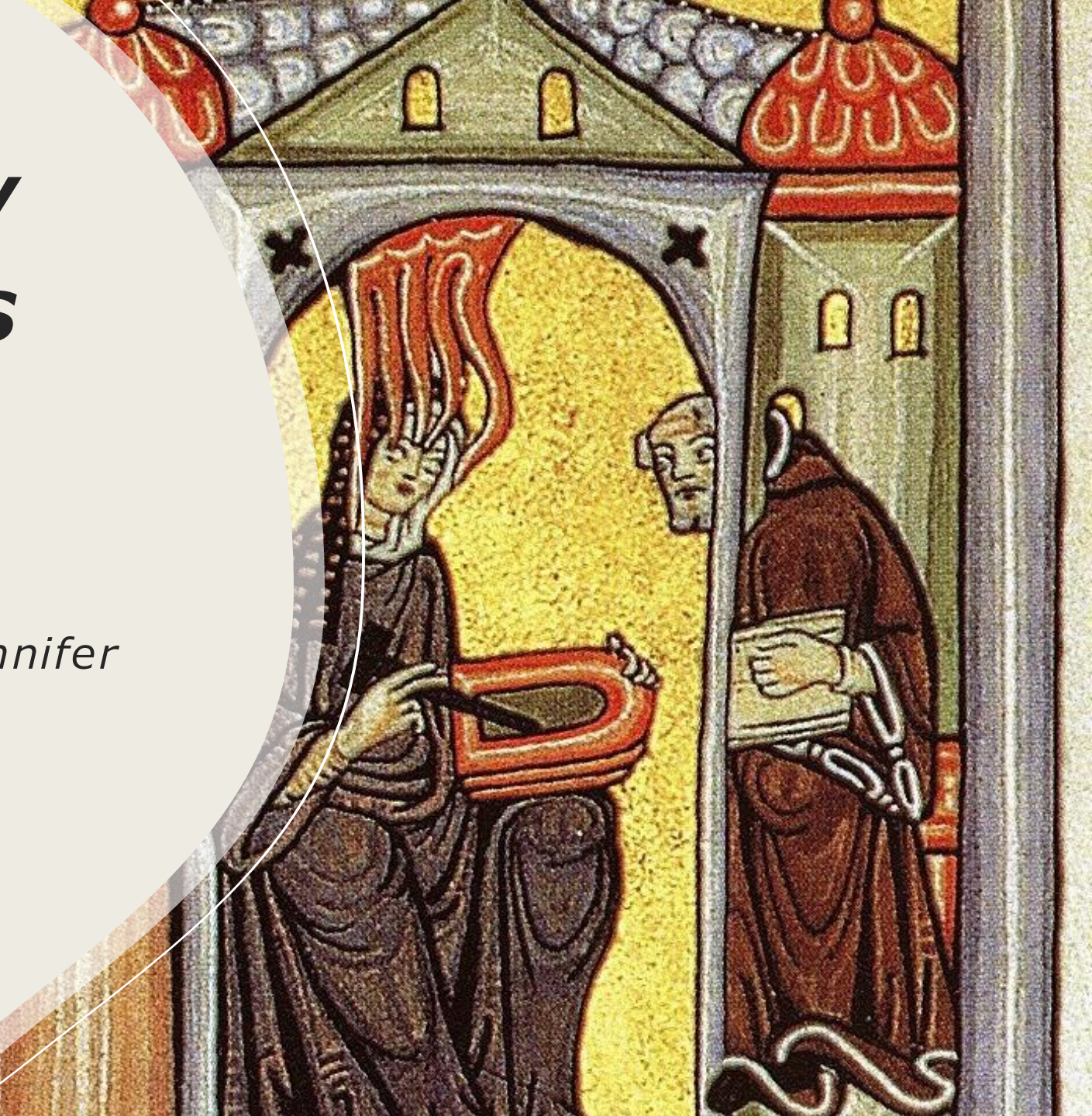
- **Second Draft and Abstract Due 01/24**
- **Final Draft and Revised Abstract Due 01/27**

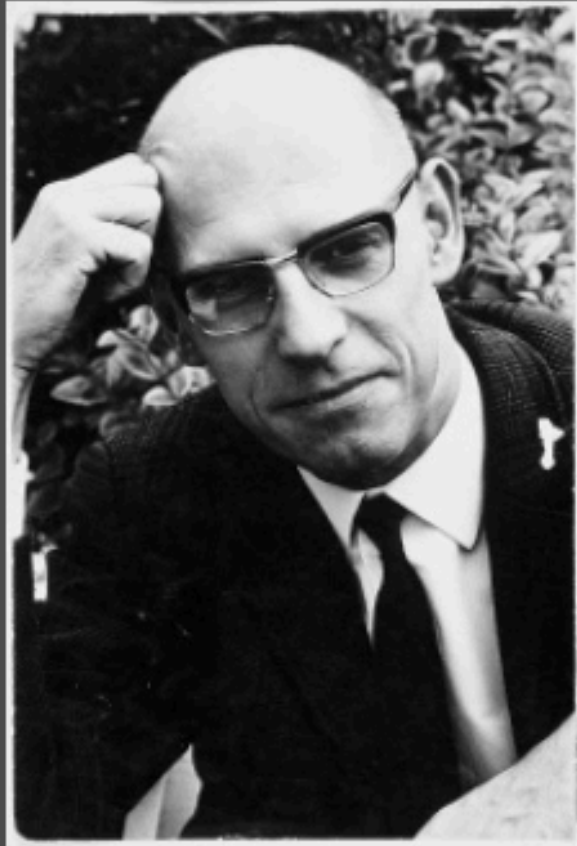
“Merleau-Ponty and Hildegard’s Apophatic Aesthetics”

*A Three-Part Mini-Course by Jennifer
Wang of Villanova University*

*Saturday Jan 18, Jan 25, and
Feb. 1 at 12 PM EST*

*Email animal@lcpfoundation.org
for free registration!*

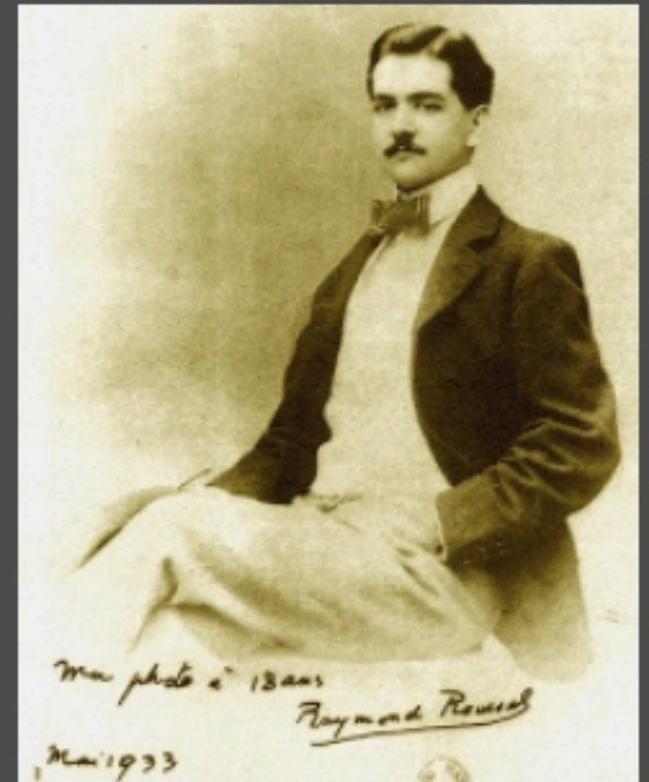




“Michel Foucault and Literary Theory: Power and Resistance through the World of Raymond Roussel”

An LCP Academy five-
week Special Topics
Course facilitated by
Giorgi Vachnadze

When: October 12th
through November
9th at 12 PM EST



This is a virtual event that is free and open to the public. Please reach out to animal@lcpfoundation.org for event registration!